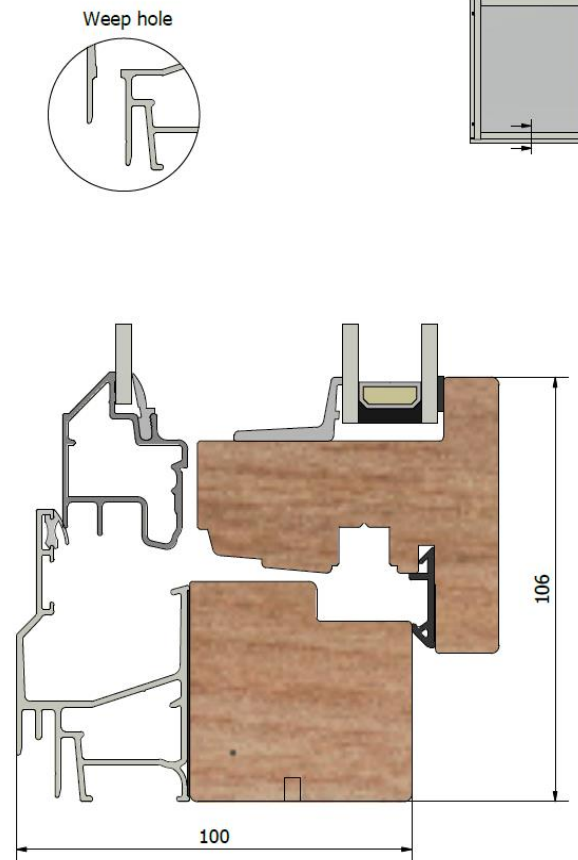
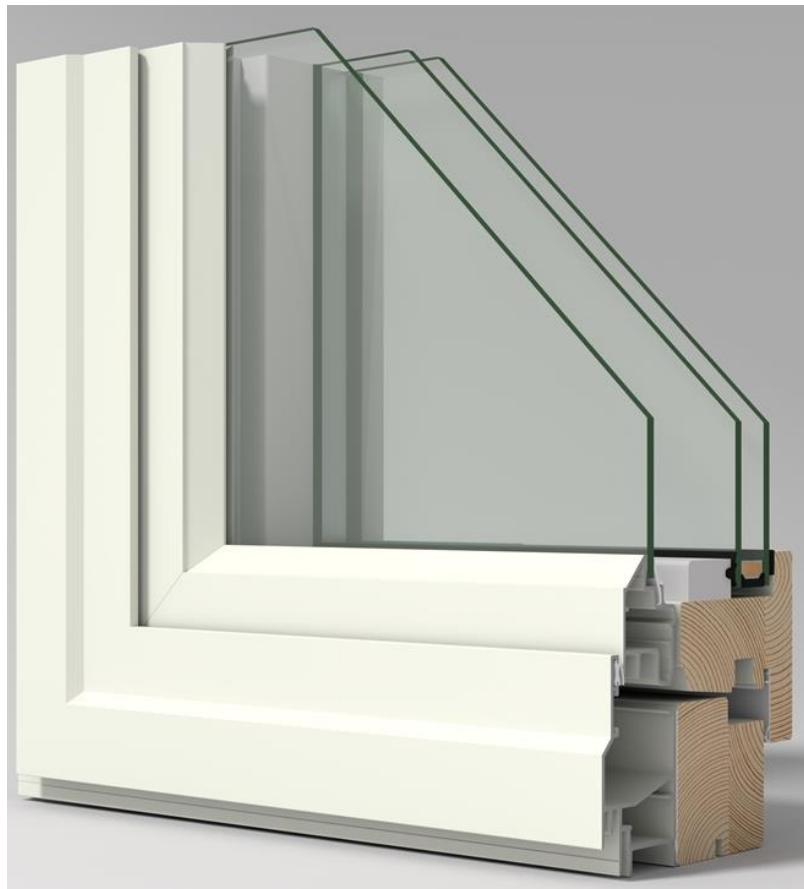


# Haga LIF1001

Inward opening window, 2+1 glazed

Product Facts



Frame depth (mm)	100
Sound reduction Rw (dB)	40 - 48
U-value (W/m <sup>2</sup> K)	0,9 - 1,1
Surface finish	Optional RAL or NCS
Weep holes	Hidden or Visible
Opening	Inward
Hinges	Bolt-hinges



Install the windowsill in the innermost track